



**DURASUPREME**  
CABINETS



**CRYSTAL**  
*a fine name in cabinetry*

**Medallion**  
CABINETS  
an ELKAY COMPANY

**HomeCrest**  
CABINETS  
*A Lifetime of Choices*

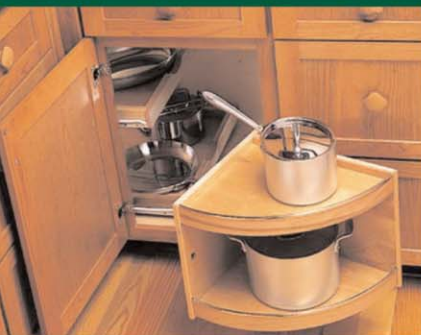
**Aristokraft**  
CABINETS

**Legacy**  
A PRODUCT OF Bertch

**Kountry**  
WOOD PRODUCTS  
*"Kitchen Cabinets Worth Owning"*

**CONTRACTOR'S**  
CHOICE





## Options

Spice Rack  
Open Wall Cabinet  
China Display Cabinet  
Open Corner Cabinet  
Curved Corner Cabinet  
Wine Rack  
Wine Shelf  
Stem Glass Holder  
Bookcase  
Tambour Storage Cabinet  
Angled End Cabinet  
Curved End Cabinet  
Wall Lazy Susan  
Base Lazy Susan  
Microwave Cabinet  
Wood Range Hood

Under Cabinet Shelves  
Pigeon Hole Organizer  
Furniture Drawer  
Spice Drawer Cabinet  
Open End Wall Shelf  
Hanging Pot Rack  
Open End Base Shelf  
Tall End Open Shelves  
Wall Tray Dividers  
Roll Out Trays  
Swing Out Pantry  
Vegetable Bins  
Mullion Doors  
Leaded Glass Doors  
Spindle Rail  
Cup Holder  
Base Tray Dividers  
Valance  
Countertop Edge Moulding  
Raised Panel Ends  
Tilt Down Sink Front  
Trash Basket Cabinet

Mixer Shelf Cabinet  
Base Open Cabinets  
Bread Box  
Pull Out Ironing Board  
Roll Top Desk  
File Drawer Base  
Desk Drawer  
Spice Drawer  
Drawer Knife Organizer  
Cutlery Divider  
Cutting Board  
Chopping Block  
Sliding Towel Bar  
Pull-Out Wire Baskets  
Wire Tray Dividers  
Dishwasher Panel  
Refrigerator Panel  
Wall Hutch  
Corner Hutch  
Open Shelves  
Glass Doors  
Glass Shelves

Finished Toe Kick

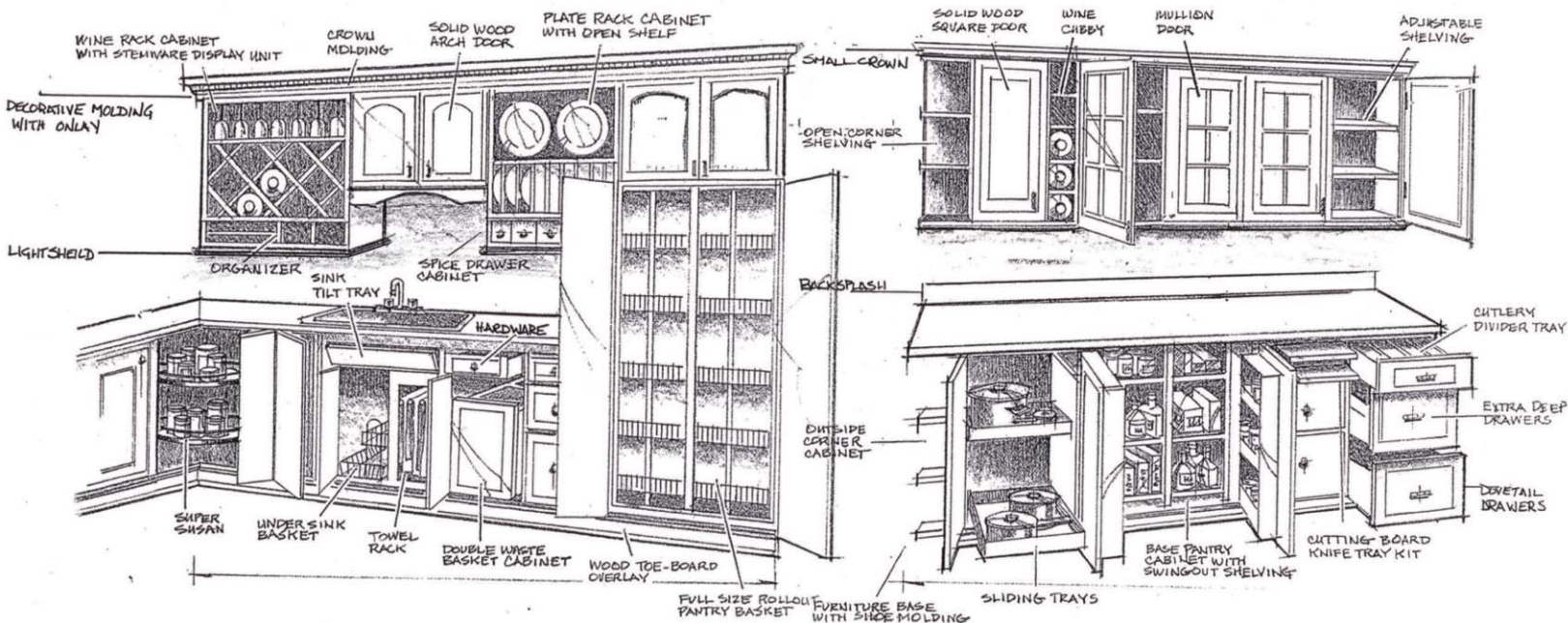
Plate Rail

Decorative Moulding

Fluted Filler/Columns

Hardware

Full Depth Base Shelves



Contact Information

Name \_\_\_\_\_ Home Phone \_\_\_\_\_  
Address \_\_\_\_\_ City \_\_\_\_\_ Zip \_\_\_\_\_  
E-mail \_\_\_\_\_ Cell Phone: \_\_\_\_\_

General Information

Is your home new construction? \_\_\_\_\_ If not, age of home \_\_\_\_\_

1. Interior Walls are: \_\_\_\_\_ Drywall \_\_\_\_\_ Concrete \_\_\_\_\_ Brick \_\_\_\_\_ Plaster

2. Exterior Walls are: \_\_\_\_\_ Wood \_\_\_\_\_ Brick/Stone \_\_\_\_\_ Vinyl Siding \_\_\_\_\_ Stucco

Are you presently working with an \_\_\_\_\_ Architect \_\_\_\_\_ Contractor \_\_\_\_\_ Interior Designer

If so, Name \_\_\_\_\_ Phone Number \_\_\_\_\_

What is your expected time frame to completion? \_\_\_\_\_

How many people live in your house? \_\_\_\_\_

\_\_\_\_\_ Adults \_\_\_\_\_ Teens \_\_\_\_\_ Children

Rank your priority for the kitchen: \_\_\_\_\_ Eating Area \_\_\_\_\_ Efficiency \_\_\_\_\_ Entertaining \_\_\_\_\_ Storage

Other: \_\_\_\_\_

What is your projected budget? \_\_\_\_\_



Cooking Information

How many cooks are in your family? \_\_\_\_\_

Is the primary cook: \_\_\_\_\_ Right Handed \_\_\_\_\_ Left Handed

Height of the primary cook: \_\_\_\_\_

Does the primary cook have any physical limitations? \_\_\_\_\_

Is there a secondary cook? \_\_\_\_\_ Height: \_\_\_\_\_ Physical Limitations: \_\_\_\_\_

Do the primary & secondary cooks prepare meals together? \_\_\_\_\_

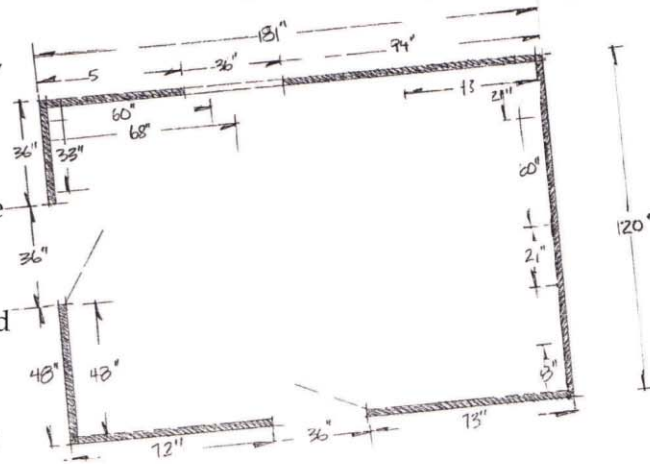
		Keep Yes/No	Replacement Size H" x W" x D"	Brand	Model Number
Refrigerator	Top Freezer				
	Bottom Freezer				
	Side-by-Side				
Range	Slide-In				
	Drop-In				
	Free-Standing				
	Cook Top				
Range Hood	Venting				
	Recirculating				
Wall Oven	Single				
	Double				
	Warming Drawer				
Microwave	Counter Top				
	Built-In				
	Drawer				
Sink Configuration	Single Bowl				
	Double Bowl				
	Triple Bowl				
	Corner				
Dishwasher	Standard				
	Drawers				



## How to Measure

Whether you are building new construction, adding on or remodeling your existing kitchen space, you need to begin by diagraming the basic room structure even before deciding how your kitchen will look. All you need is a pencil, the grid sheet in this booklet or paper and a tape measure.

1. Starting in a corner, select a wall and measure the distance, in inches, of everything on that wall from the corner. Mark all the measurements on your sketch, and be sure to indicate windows, doors (including the direction they swing), closets, alcoves as well as appliances.
2. Go to the next corner and repeat your measuring procedure along the next wall. Continue until you have measured the entire room and marked the measurements on your sketch.
3. Now mark the overall length of each wall, the height of the walls and the height of each window from the floor (as well as the height of the window from the top of the window to the ceiling).
4. Finally, measure the distance of every item from the floor, including electrical outlets, light switches, ledges, soffits, water pipes, gas lines, heat vents and drains.



**Use this grid to sketch your kitchen plan.**

